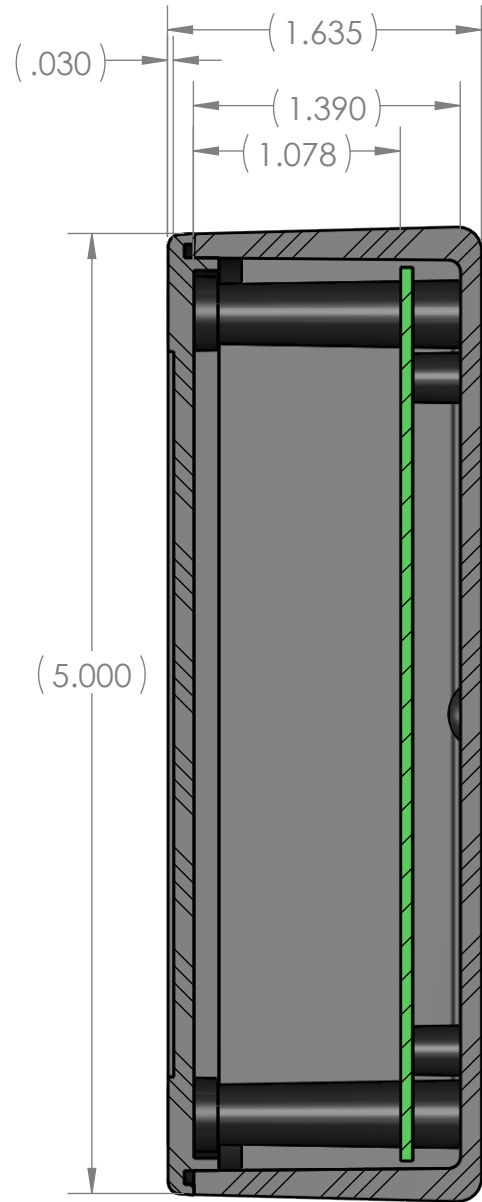
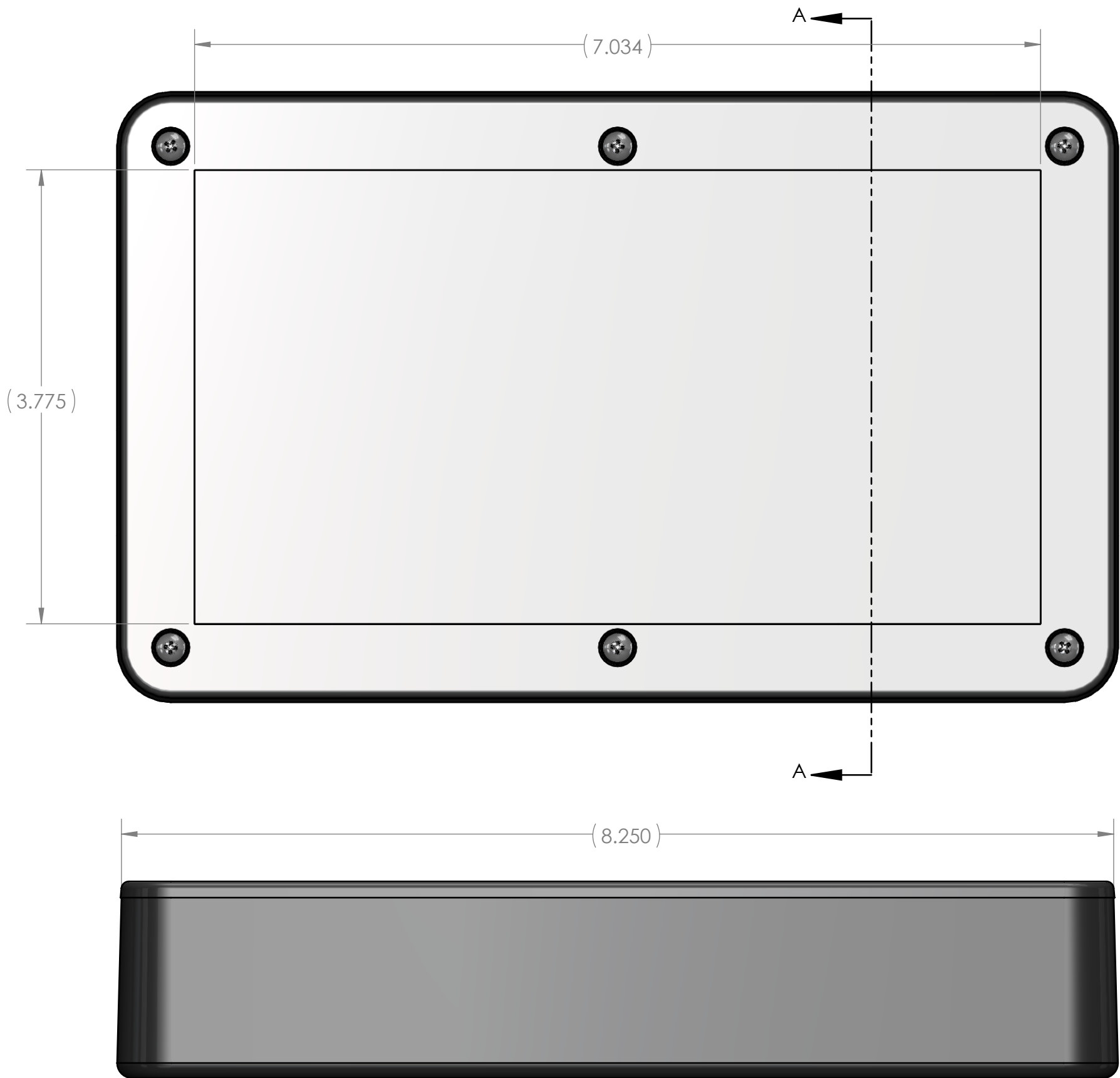
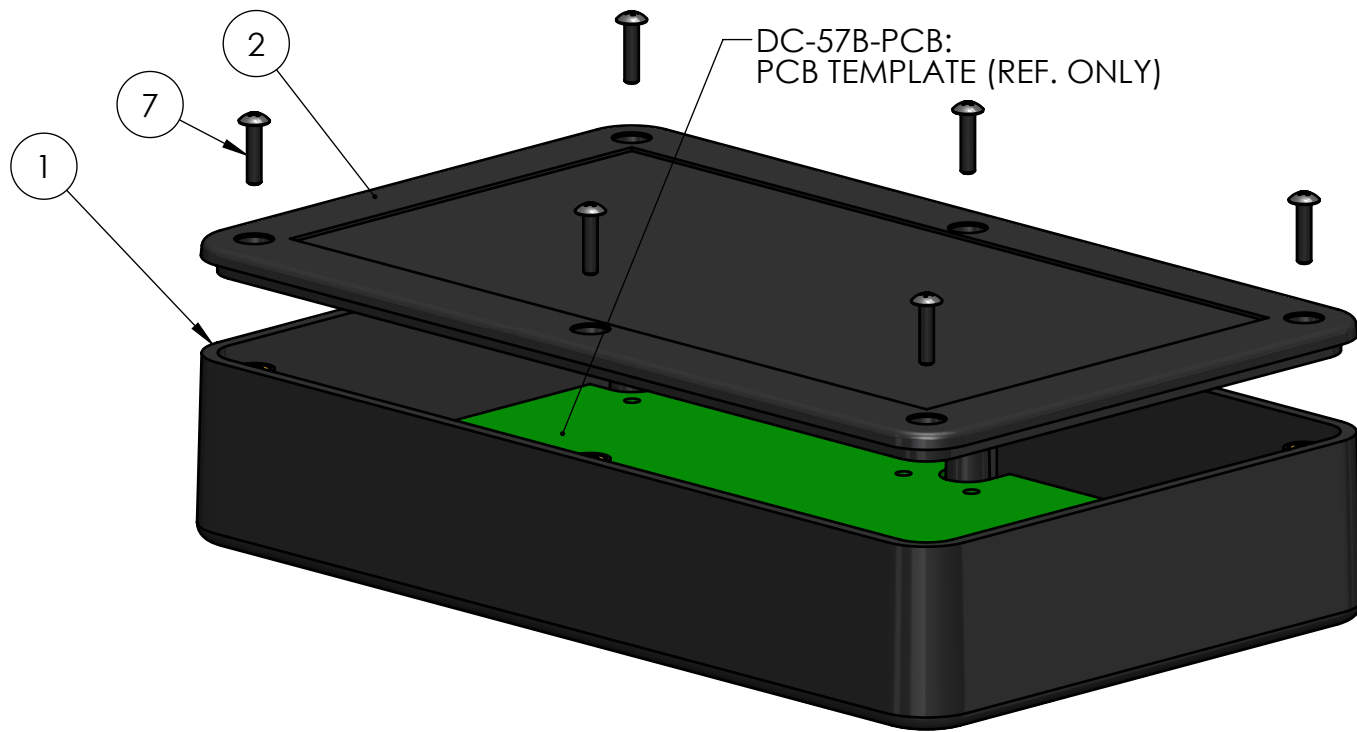


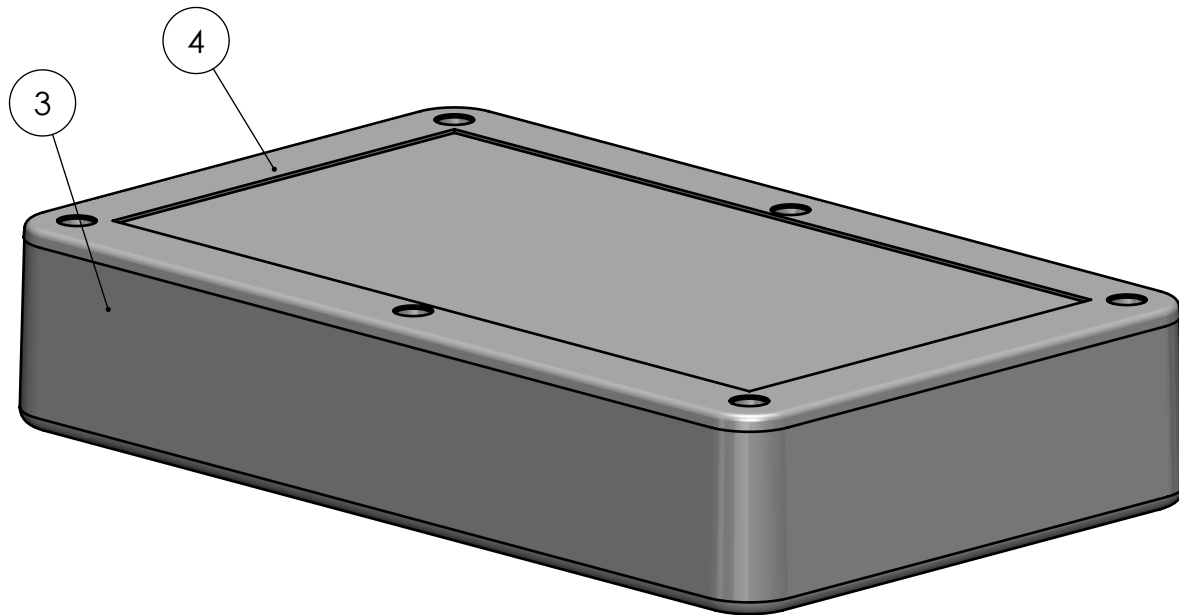
BOM Table									
ITEM NO.	PART NUMBER	Rev.	Description	Material	FlameRating	Color	DC-57PMBYR/QTY.	DC-57PMBYR*01/QTY.	DC-57PMBYR*03/QTY.
1	DC-57BPMBY	-.04	BASE	ABS	UL94-5VA	BLACK	1	-	-
2	DC-58C-R	-.02	COVER: RECESSED SMOOTH	ABS	UL94V-0	BLACK	1	-	-
3	DC-57BPMBY*01	-.04	BASE	ABS	UL94-5VA	GRAY	-	1	-
4	DC-58C-R*01	-.02	COVER: RECESSED SMOOTH	ABS	UL94V-0	GRAY	-	1	-
5	DC-57BPMBY*03	-.04	BASE	ABS	UL94-5VA	BONE	-	-	1
6	DC-58C-R*03	-.02	COVER: RECESSED SMOOTH	ABS	UL94V-0	BONE	-	-	1
7	SCREWS-DC2-BR	-	ASSEMBLY SCREW				6	6	6



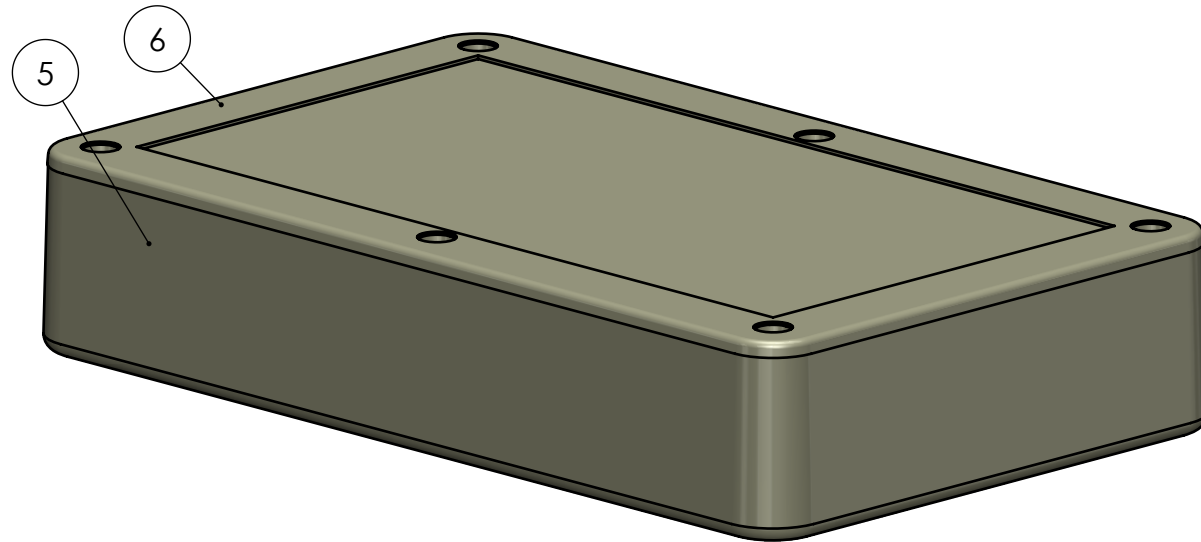
SECTION A-A



DC-57PMBYR



DC-57PMBYR*01



DC-57PMBYR*03

REV.	DESCRIPTION	ZONE	BY	APPR'D	DATE
REVISIONS					


UNLESS OTHERWISE SPECIFIED:
DIMENSIONS ARE IN: INCHES[mm]
TOLERANCES: ANGULAR: ±2°
TWO PLACE DECIMAL: ±.010
THREE PLACE DECIMAL: ±.005
PRINTED GRAPHICS: ±.010

PROPRIETARY AND CONFIDENTIAL
THE INFORMATION CONTAINED IN THIS
DRAWING IS THE SOLE PROPERTY OF
POLYCASE. ANY REPRODUCTION IN PART
OR AS A WHOLE WITHOUT THE WRITTEN
PERMISSION OF POLYCASE IS PROHIBITED.
CAD FILE: DC-57PMBYR

PART NO.
DC-57PMBYR
MATERIAL
FLAME RATING


	NAME	DATE
DRAWN	D.M.F.	5/17/2017
CHECKED		12/31/2999

SCALE: 1:1

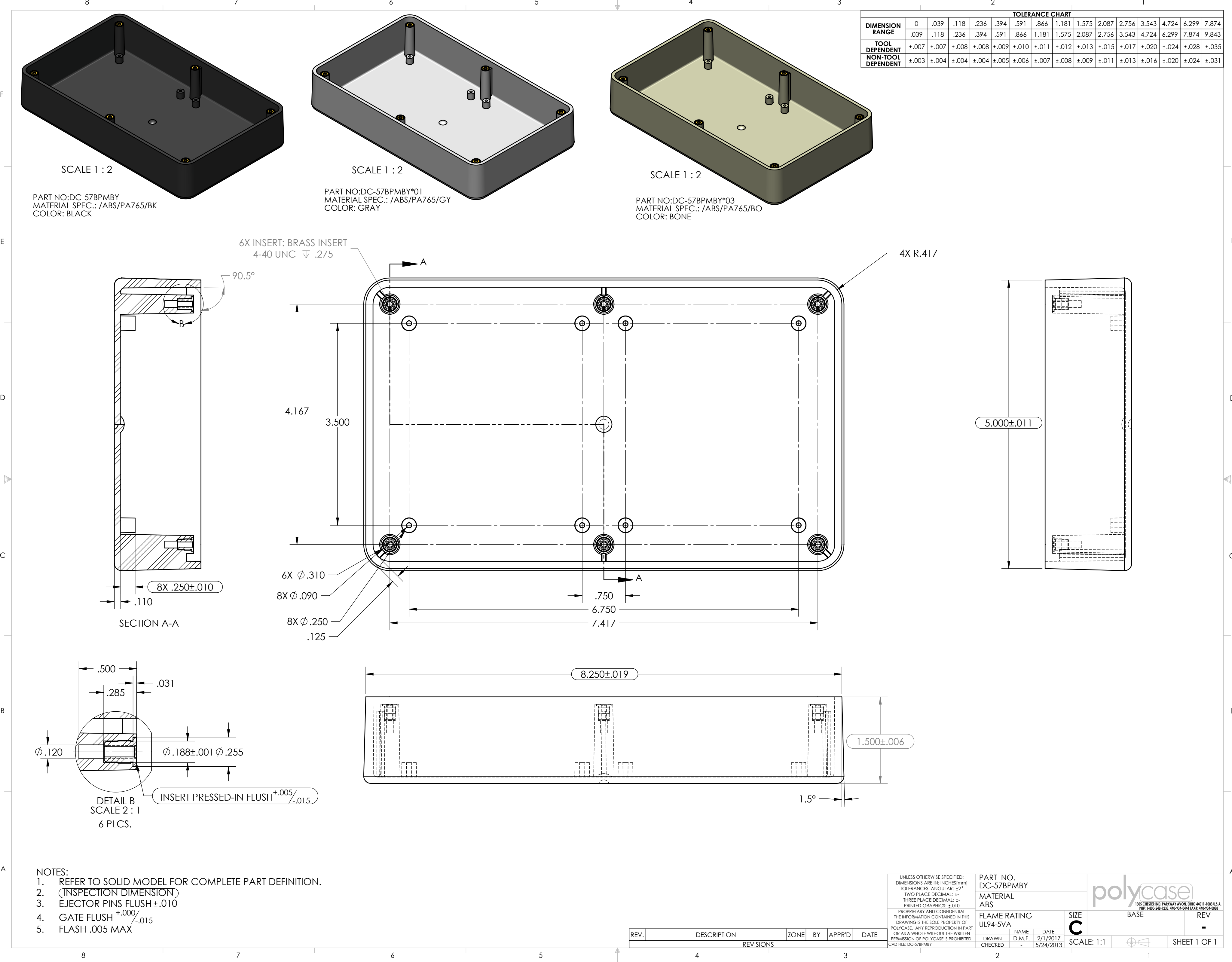


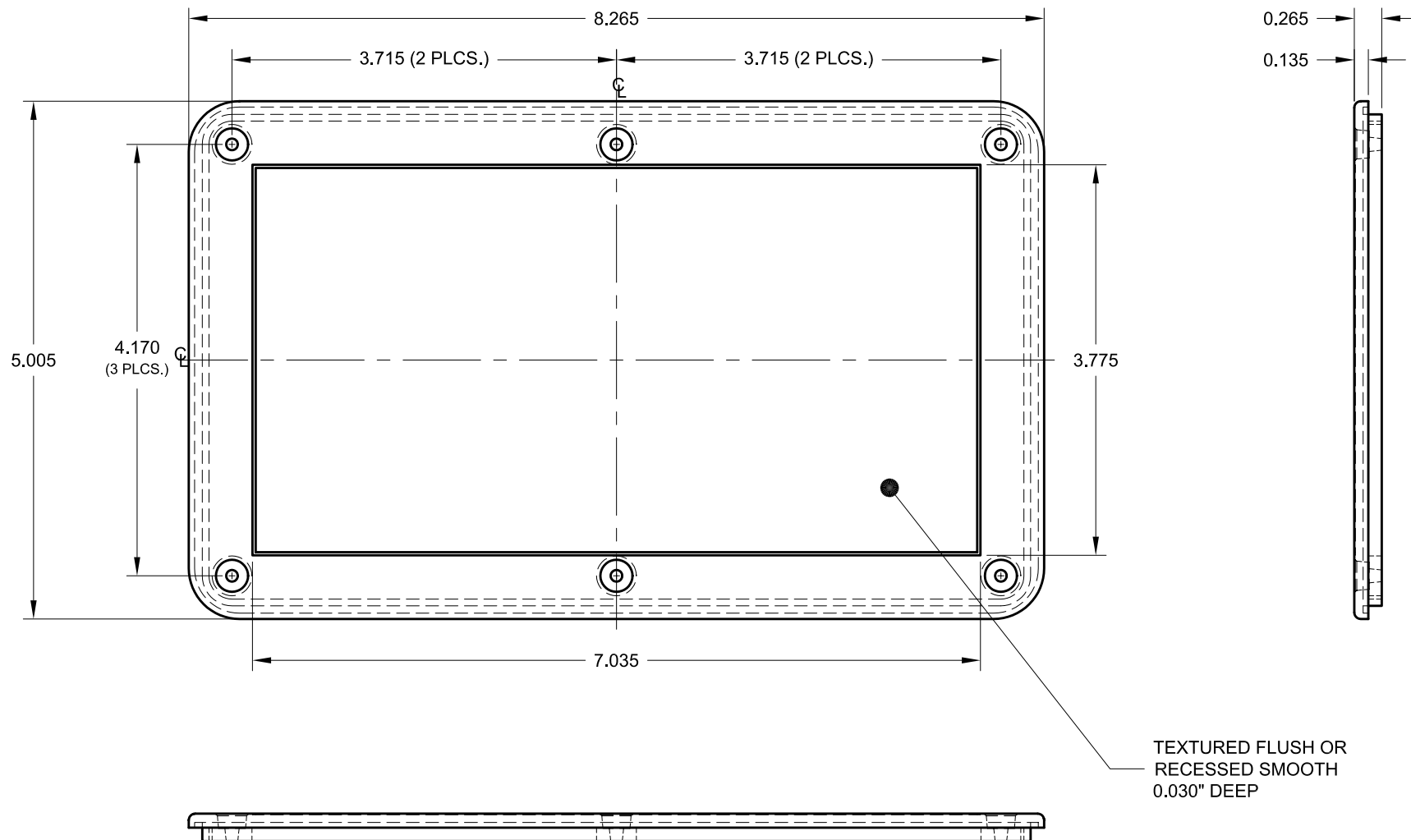
1305 CHESTER DR. PARKWAY AVON, OHIO 44011-1003 U.S.A.
PH: 1-800-546-1233 414-754-0044 FAX: 414-754-0068


REV
-

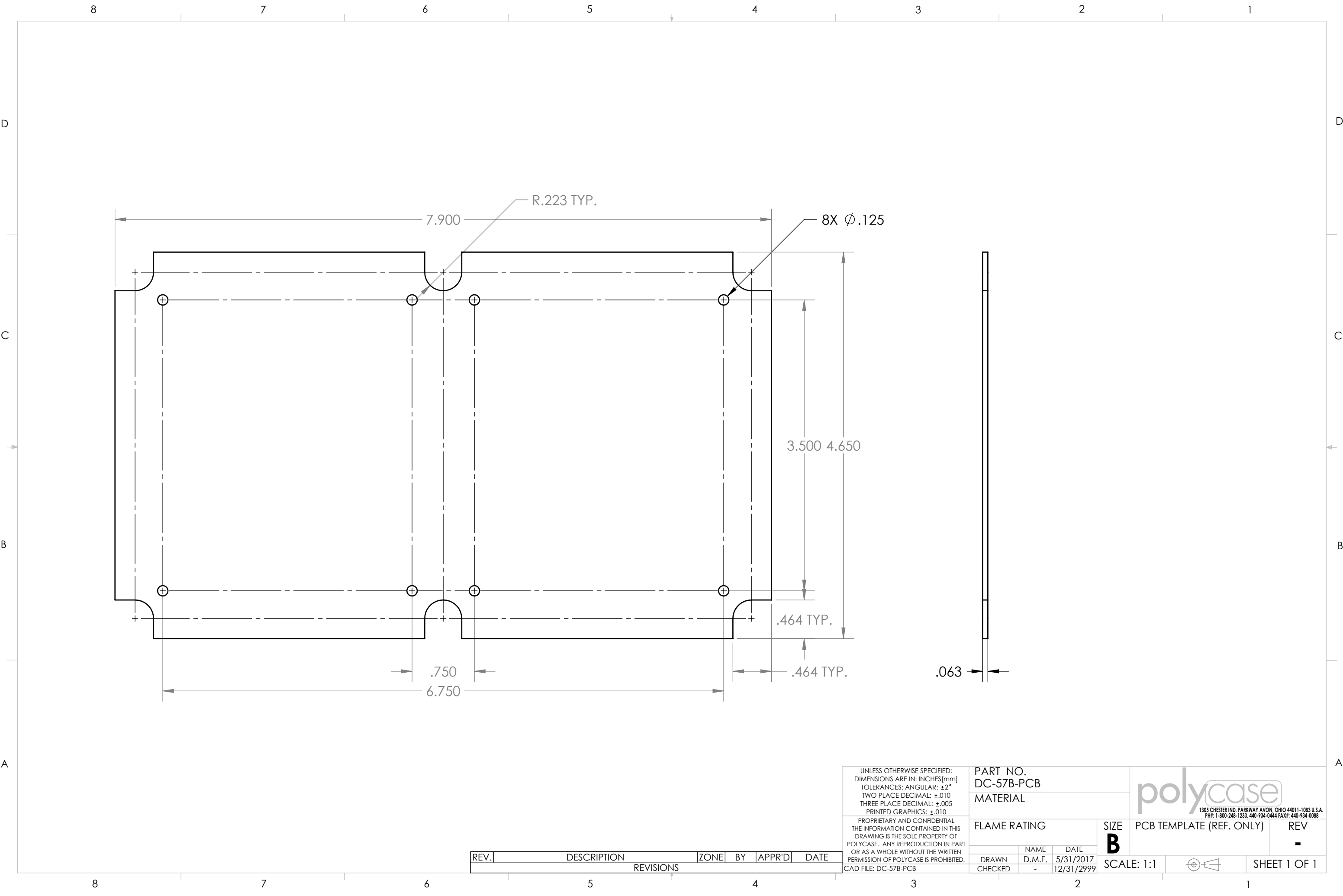


SHEET 1 OF 1





					 <p>POLYCASE YOUR PERFECT FIT</p>	DRWN BY	APP. BY	SCALE	DATE:
						M.M.T.	B.B.	FULL	06/13/00
						JOB NO:		PRODUCT:	
								DC-58C	
						CUSTOMER:			
						TITLE: PRODUCT DETAIL DRAWING			
REV	DESCRIPTION	BY	CHK	DATE	<p>TOLERANCES UNLESS OTHERWISE SPECIFIED</p> <p>X.XX ±.020</p> <p>X.XXX ±.010</p>	<p>1305 CHESTER IND. PARKWAY AVON, OHIO 44011 U.S.A.</p> <p>PH# 1-800-248-1233, 440-934-0444 FAX# 440-934-0088</p> <p>THIS DRAWING AND THE INFORMATION CONTAINED ARE THE PROPERTY OF POLYCASE AND IT IS NOT TO BE REPRODUCED, COPIED OR USED IN ANY WAY DETRIMENTAL TO THE INTEREST OF POLYCASE.</p>			



REV.	DESCRIPTION	ZONE	BY	APPR'D	DATE
REVISIONS					

UNLESS OTHERWISE SPECIFIED:
DIMENSIONS ARE IN: INCHES [mm]
TOLERANCES: ANGULAR: ±2°
TWO PLACE DECIMAL: ±.010
THREE PLACE DECIMAL: ±.005
PRINTED GRAPHICS: ±.010

PROPRIETARY AND CONFIDENTIAL
THE INFORMATION CONTAINED IN THIS
DRAWING IS THE SOLE PROPERTY OF
POLYCASE. ANY REPRODUCTION IN PART
OR AS A WHOLE WITHOUT THE WRITTEN
PERMISSION OF POLYCASE IS PROHIBITED.
CAD FILE: DC-57B-PCB

PART NO. DC-57B-PCB		
MATERIAL		
FLAME RATING		
DRAWN	NAME	DATE
CHECKED	D.M.F.	5/31/2017
	-	12/31/2999

polycase

1305 CHESTER IND. PARKWAY AVON, OHIO 44011-1083 U.S.A.
PH#: 1-800-248-1233, 440-934-0444 FAX#: 440-934-0088

SIZE B	PCB TEMPLATE (REF. ONLY)	REV -
SCALE: 1:1	SHEET 1 OF 1	